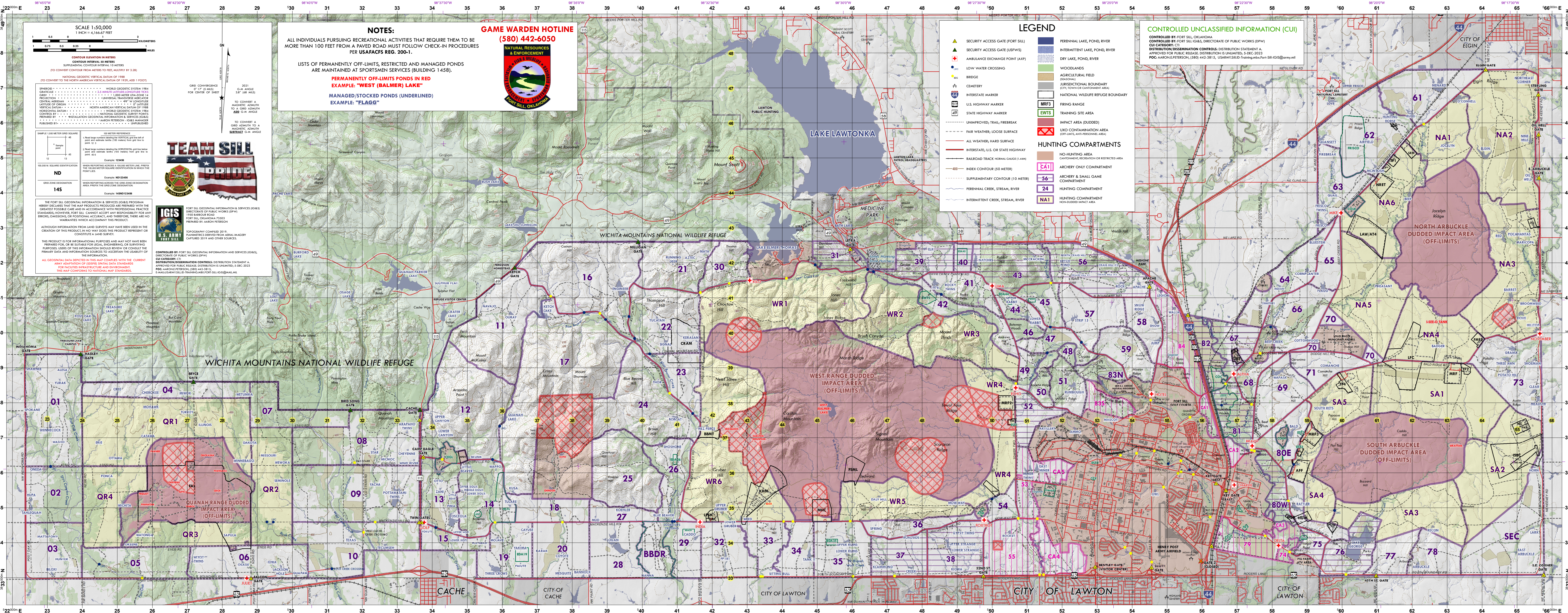


U.S. ARMY - FIRES CENTER OF EXCELLENCE AND FORT SILL NATURAL RESOURCES SPORTSMEN SERVICES RECREATION MAP



SCALE 1:50,000

1 INCH = 4,166.67 FEET

1 KILOMETER = 0.62 MILES

NOTES:

ALL INDIVIDUALS PURSUING RECREATIONAL ACTIVITIES THAT REQUIRE THEM TO BE MORE THAN 100 FEET FROM A PAVED ROAD MUST FOLLOW CHECK-IN PROCEDURES PER USAFAPS REG. 200-1.

LISTS OF PERMANENTLY OFF-LIMITS, RESTRICTED AND MANAGED PONDS ARE MAINTAINED AT SPORTSMEN SERVICES (BUILDING 1458).

PERMANENTLY OFF-LIMITS PONDS IN RED
EXAMPLE: "WEST (BALMER) LAKE"

MANAGED/STOCKED PONDS (UNDERLINED)
EXAMPLE: "FLAGG"

GAME WARDEN HOTLINE

(580) 442-6050

TEAM SILL PRIDE

IG&S

U.S. ARMY
FORT SILL

CONTROLLED BY: FORT SILL, OKLAHOMA
CONTROLLED BY: FORT SILL IG&S, DIRECTORATE OF PUBLIC WORKS (DPW)
CUI CATEGORY: C1
DISTRIBUTION/RESSEMIANATION CONTROLS: DISTRIBUTION STATEMENT A
APPROVED FOR PUBLIC RELEASE. DISTRIBUTION IS UNLIMITED. 5-DEC-2023
POC: AARON.PETERSON, (580) 442-3815, USAARMYSIBLD-Training@fort-sill-ig&s@army.mil

LEGEND

- ▲ SECURITY ACCESS GATE (FORT SILL)
- ▲ SECURITY ACCESS GATE (USPWS)
- ▲ AMBULANCE EXCHANGE POINT (AEP)
- BRIDGE
- ☒ CEMETERY
- ☒ INTERSTATE MARKER
- ☒ U.S. HIGHWAY MARKER
- ☒ STATE HIGHWAY MARKER
- ☒ UNIMPROVED, TRAIL, FIREBREAK
- ☒ FAIR WEATHER, LOOSE SURFACE
- ☒ INTERSTATE, U.S. OR STATE HIGHWAY
- ☒ RAILROAD TRACK (NORMAL GAUGE (1.44M))
- ☒ INDEX CONTOUR (50 METER)
- ☒ SUPPLEMENTARY CONTOUR (10 METER)
- ☒ PERENNIAL CREEK, STREAM, RIVER
- ☒ INTERMITTENT CREEK, STREAM, RIVER
- ▭ PERENNIAL LAKE, POND, RIVER
- ▭ INTERMITTENT LAKE, POND, RIVER
- ▭ DRY LAKE, POND, RIVER
- ▭ WOODLANDS
- ▭ AGRICULTURAL FIELD (SEASONAL)
- ▭ JURISDICTIONAL BOUNDARY (CITY/TOWN OR CANTONMENT AREA)
- ▭ NATIONAL WILDLIFE REFUGE BOUNDARY
- ▭ MRF3 FIRING RANGE
- ▭ EWTS TRAINING SITE AREA
- ▭ IMPACT AREA (DUDDED)
- ▭ UXO CONTAMINATION AREA (OFF-LIMITS, ANTI-PERSONNEL AREA)

HUNTING COMPARTMENTS

- ▭ NO-HUNTING AREA (CANTONMENT, RECREATION OR RESTRICTED AREA)
- ▭ CA1 ARCHERY ONLY COMPARTMENT
- ▭ 56 ARCHERY & SMALL GAME COMPARTMENT
- ▭ 24 HUNTING COMPARTMENT
- ▭ NA1 HUNTING COMPARTMENT (NON-DUDDED IMPACT AREA)

CONTROLED UNCLASSIFIED INFORMATION (CUI)

CONTROLLED BY: FORT SILL, OKLAHOMA
CONTROLLED BY: FORT SILL IG&S, DIRECTORATE OF PUBLIC WORKS (DPW)
CUI CATEGORY: C1
DISTRIBUTION/RESSEMIANATION CONTROLS: DISTRIBUTION STATEMENT A
APPROVED FOR PUBLIC RELEASE. DISTRIBUTION IS UNLIMITED. 5-DEC-2023
POC: AARON.PETERSON, (580) 442-3815, USAARMYSIBLD-Training@fort-sill-ig&s@army.mil

0 1 2 3 4 5 6 7 8 9 10 11 12 13 14 15 16 17 INCH

23 24 25 26 27 28 29 30 31 32 33 34 35 36 37 38 39 40 41 42 43 44 45 46 47 48 49 50 51 52 53 54 55 56 57 58 59 60 61 62 63 64 65 66 67 68 69 70 71 72 73 74 75 76 77 78 79 80 81 82 83 84 85 86 87 88 89 90 91 92 93 94 95 96 97 98 99 100

34.45000 N 34.44000 N 34.43000 N 34.42000 N 34.41000 N 34.40000 N 34.39000 N 34.38000 N 34.37000 N 34.36000 N 34.35000 N 34.34000 N 34.33000 N

98°45'00"W 98°42'30"W 98°40'00"W 98°37'30"W 98°35'00"W 98°32'30"W 98°30'00"W 98°27'30"W 98°25'00"W 98°22'30"W 98°20'00"W 98°17'30"W 98°15'00"W 98°12'30"W 98°10'00"W 98°07'30"W 98°05'00"W 98°02'30"W 98°00'00"E 98°02'30"E 98°05'00"E 98°07'30"E 98°10'00"E 98°12'30"E 98°15'00"E 98°17'30"E 98°20'00"E 98°22'30"E 98°25'00"E 98°27'30"E 98°30'00"E 98°32'30"E 98°35'00"E 98°37'30"E 98°40'00"E 98°42'30"E 98°45'00"E