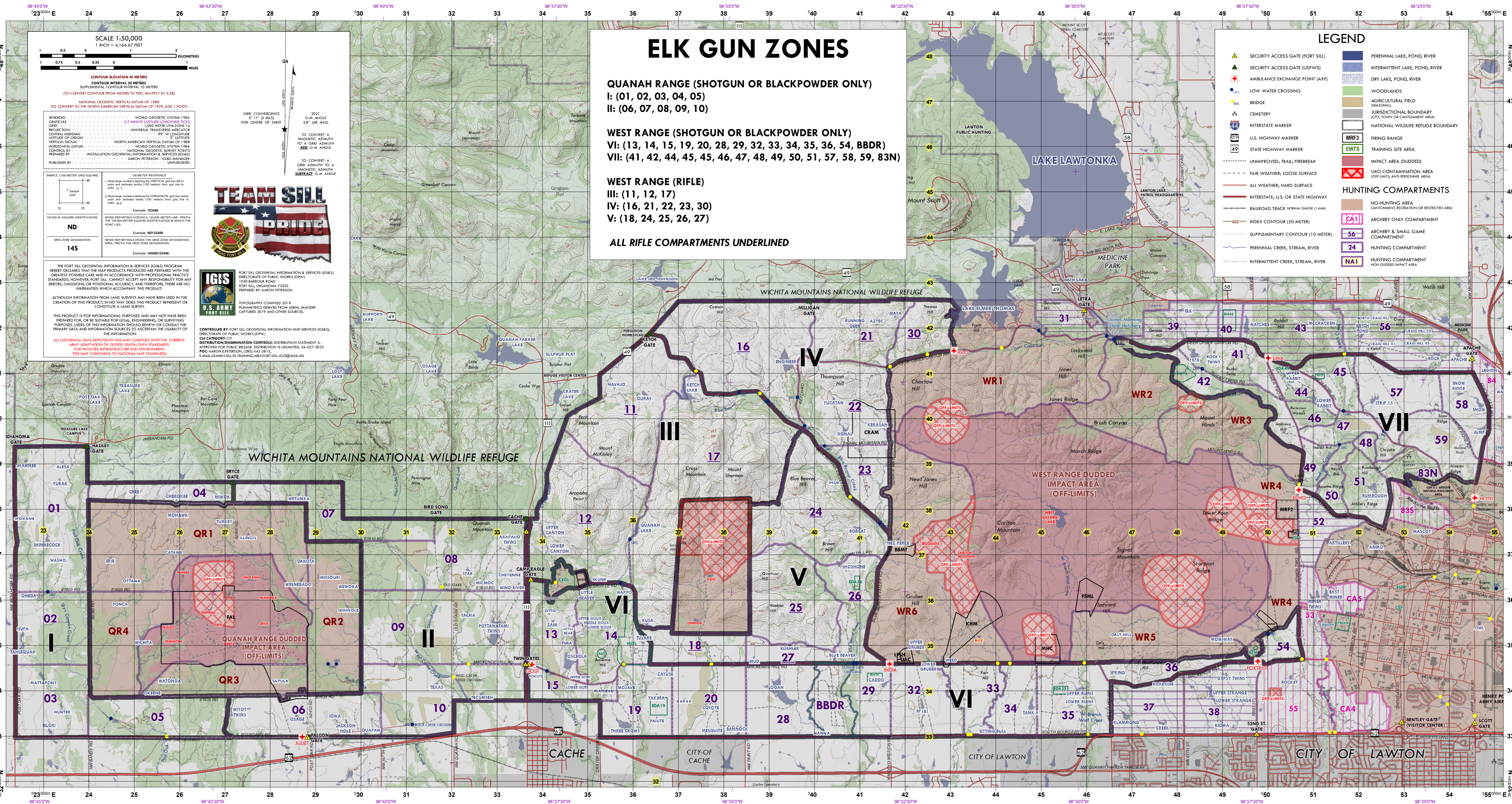


U.S. ARMY - FIRES CENTER OF EXCELLENCE AND FORT SILL

NATURAL RESOURCES SPORTSMEN SERVICES RECREATION MAP

FOR RECREATIONAL USE ONLY
 NOT INTENDED FOR TRAINING OR TARGETING PURPOSES.



ELK GUN ZONES

QUANAH RANGE (SHOTGUN OR BLACKPOWDER ONLY)
 I: (01, 02, 03, 04, 05)
 II: (06, 07, 08, 09, 10)

WEST RANGE (SHOTGUN OR BLACKPOWDER ONLY)
 VI: (13, 14, 15, 19, 20, 28, 29, 32, 33, 34, 35, 36, 54, BBDR)
 VII: (41, 42, 44, 45, 46, 47, 48, 49, 50, 51, 57, 58, 59, 83N)

WEST RANGE (RIFLE)
 III: (11, 12, 17)
 IV: (16, 21, 22, 23, 30)
 V: (18, 24, 25, 26, 27)

ALL RIFLE COMPARTMENTS UNDERLINED

SCALE 1:50,000
 1 INCH = 4,166.67 FEET
 1 KILOMETER = 0.621371 MILES

CONTOUR ELEVATION IN METERS
 CONTOUR INTERVAL 50 METERS
 SUPPLEMENTAL CONTOUR INTERVAL 10 METERS
 (TO CONVERT CONTOUR FROM METERS TO FEET, MULTIPLY BY 3.28)
 NATIONAL GEODETIC VERTICAL DATUM OF 1988
 (TO CONVERT TO THE NORTH AMERICAN VERTICAL DATUM OF 1929, ADD 1 FOOT)

GRID CONVERGENCE
 2021 G-M ANGLE 0° 17' 15 MILS
 3.8" (68 MILS)
 TO CONVERT A MAGNETIC AZIMUTH TO A GRID AZIMUTH
 ADD G-M ANGLE
 TO CONVERT A GRID AZIMUTH TO A MAGNETIC AZIMUTH
 SUBTRACT G-M ANGLE

WORLD GEODETIC SYSTEM 1984
 2.5 MINUTE LATTITUDE/LONGITUDE TICS
 1,000 METER UTM ZONE 14
 UNIVERSAL TRANSVERSE MERCATOR
 PROJECTION
 99° W LONGITUDE
 CENTRAL MERIDIAN
 NORTH AMERICAN VERTICAL DATUM OF 1988
 HORIZONTAL DATUM
 NATIONAL GEODETIC SURVEY POINTS
 CONTROL BY INSTALLATION GEOSPATIAL INFORMATION & SERVICES (IG&S) MANAGER
 PUBLISHED BY AARON PETERSON

100 METER REFERENCE
 1. Read large numbers labeling the VERTICAL grid line to the left of point and estimate tenths (100 meters) from grid line to point 12
 2. Read large numbers labeling the HORIZONTAL grid line below point and estimate tenths (100 meters) from grid line to point 44
 Example: 123456

ND
 GRID ZONE DESIGNATION
 14S
 Example: ND123456

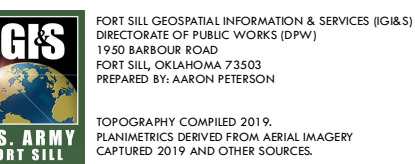
14SND123456
 WHEN REPORTING ACROSS THE GRID ZONE DESIGNATION AREA, PREFIX THE GRID ZONE DESIGNATION.

IG&S
 FORT SILL GEOSPATIAL INFORMATION & SERVICES (IG&S)
 DIRECTORATE OF PUBLIC WORKS (DPW)
 1930 BARBOUR ROAD
 FORT SILL, OKLAHOMA 73503
 PREPARED BY AARON PETERSON

CONTROLLED BY: FORT SILL GEOSPATIAL INFORMATION & SERVICES (IG&S), DIRECTORATE OF PUBLIC WORKS (DPW)
CLASSIFICATION: UNCLASSIFIED
DISTRIBUTION/DESSEMINATION CONTROLS: DISTRIBUTION STATEMENT A. APPROVED FOR PUBLIC RELEASE. DISTRIBUTION IS UNLIMITED. 24-OCT-2023
 POC: AARON.PETERSON.1580.442.38.15
 E-MAIL: USARMY.SILL.DIAGNOSIS.MX.FORTSILL-IG&S@MAIL.MIL

LEGEND

	SECURITY ACCESS GATE (FORT SILL)		PERENNIAL LAKE, POND, RIVER
	SECURITY ACCESS GATE (USFWS)		INTERMITTENT LAKE, POND, RIVER
	AMBULANCE EXCHANGE POINT (AXP)		DRY LAKE, POND, RIVER
	LOW WATER CROSSING		WOODLANDS
	BRIDGE		AGRICULTURAL FIELD (SEASONAL)
	CEMETERY		JURISDICTIONAL BOUNDARY (CITY, TOWN OR CANTONMENT AREA)
	INTERSTATE MARKER		NATIONAL WILDLIFE REFUGE BOUNDARY
	STATE HIGHWAY MARKER		MRF3 FIRING RANGE
	UNIMPROVED, TRAIL, FIREBREAK		EWTS TRAINING SITE AREA
	FAIR WEATHER; LOOSE SURFACE		IMPACT AREA (DUDDED)
	ALL WEATHER; HARD SURFACE		UXO CONTAMINATION AREA (OFF-LIMITS, ANTI-PERSONNEL AREA)
	INTERSTATE, U.S. OR STATE HIGHWAY		HUNTING COMPARTMENTS
	RAILROAD TRACK, NORMAL GAUGE (1.44M)		NO-HUNTING AREA (CANTONMENT, RECREATION OR RESTRICTED AREA)
	INDEX CONTOUR (50 METER)		ARCHERY ONLY COMPARTMENT
	SUPPLEMENTARY CONTOUR (10 METER)		ARCHERY & SMALL GAME COMPARTMENT
	PERENNIAL CREEK, STREAM, RIVER		HUNTING COMPARTMENT
	INTERMITTENT CREEK, STREAM, RIVER		NON-DUDDED IMPACT AREA



IG&S
 FORT SILL GEOSPATIAL INFORMATION & SERVICES (IG&S)
 DIRECTORATE OF PUBLIC WORKS (DPW)
 1930 BARBOUR ROAD
 FORT SILL, OKLAHOMA 73503
 PREPARED BY AARON PETERSON